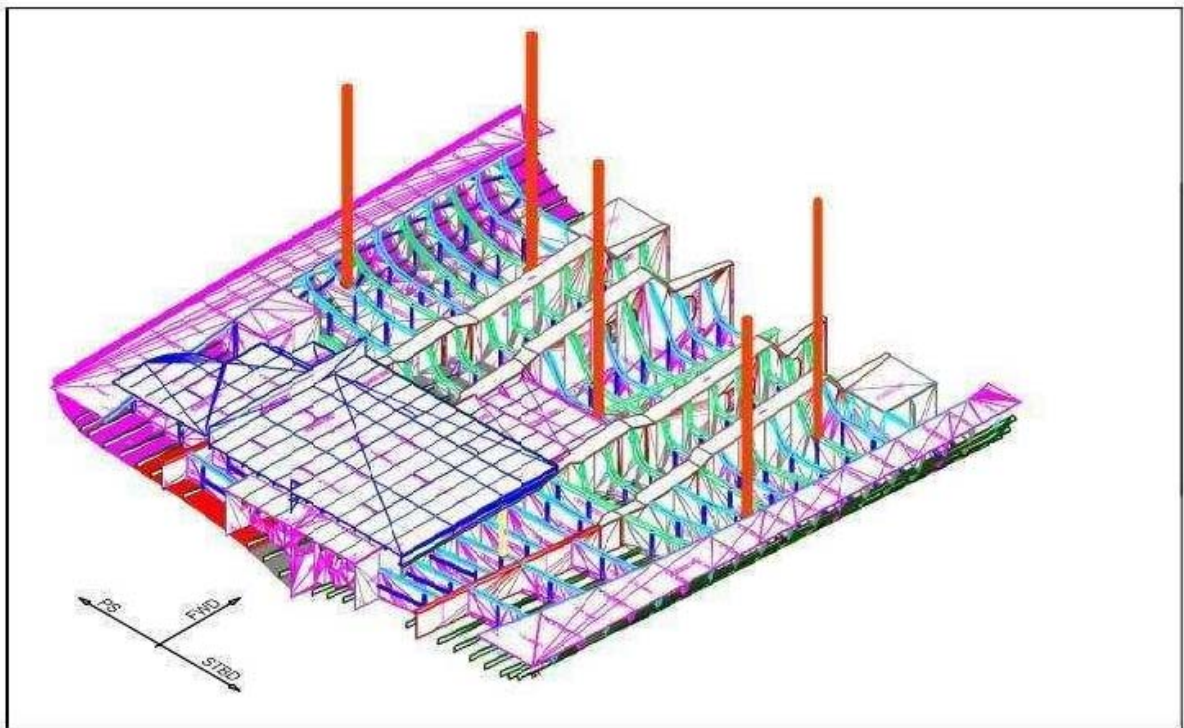


Scheda tecnica

M/Y 57m

TEKNOCONSULTING



Esempio documentazione nesting

SCALE 1:33

PROJECT:	SIZE: 12000.0mm x 2500.0mm	MARKING:	45706.1mm
FILE:	THICKNESS: 6.0mm	CUTTING:	128545.5mm
NEST:	STOCK: AH36-06	RAPID:	115977.3mm
CUT TYPE: LIKE	MATERIAL: Steel AH36	CUT FEED:	56.6mm/sec
NESTED:	NC MACHINE:	MARK FEED:	100.0mm/sec
PROCESSED:	AREA: 18304425.5 mm ²	FAST FEED:	100.0mm/sec
DATE:	UTILIZATION: 61%	PROCESSING TIME:	71min

WEIGHT PLATE:	1413.0kg
WEIGHT PARTS:	862.2kg
WEIGHT REMNANT:	0.0kg
WEIGHT SCRAP:	550.8kg

REVISION	0
NEST:	AH-36 TH.06 -005
REMNANT NAME:	N/A

Item	Piece Type	Part Name	Part Side	Qty	Wt. (kg)	Assembly
1	PLATE	FOND02-020	P	1	32.1	F-17
2	PLATE	FOND02-049	P	1	41	F-30
3	PLATE	FOND02-059	P	1	46.2	F-32
4	PLATE	FOND02-090	P	1	69.1	F-23
5	PLATE	FOND02-095	P	1	26.8	F-24
6	PLATE	FOND02-098	P	1	69.2	F-20
7	PLATE	FOND02-103	P	1	45.5	F-19
8	PLATE	FOND02-106	P	1	42.3	F-18
9	PLATE	FOND02-107	P	1	26.3	F-17
10	PLATE	FOND02-117	S	1	39.1	F-17
11	PLATE	FOND02-118	S	1	42.3	F-18
12	PLATE	FOND02-121	S	1	45.5	F-19
13	PLATE	FOND02-129	S	1	47	F-21
14	PLATE	FOND02-132	S	1	69.2	F-20
15	PLATE	FOND02-135	S	1	69.1	F-23
16	PLATE	FOND02-140	S	1	26.8	F-24
17	PLATE	FOND02-141	S	1	30.3	F-25
18	PLATE	FOND02-160	S	1	41	F-30
19	PLATE	FOND02-184	S	1	46.2	F-32

Esempio documentazione assembly

D-2800/Stiffners
SUB-ASSY Stiffners
Weight: 200.8kg
CG: 9570.2mm, -551.3mm, 2723.5mm
Fipshc <none>

Item	Part Name	Qty	Stock Name	Nest	Weight (kg)	Note
1	FOND02-043	1	AH36-05	AH-36 TH.05-001	1.8	
2	FOND02-044	1	AH36-08	AH-36 TH.08-001	1.4	
3	FOND02-070	1	AH36-05	AH-36 TH.05-001	9.3	
4	FOND02-071	1	AH36-05	AH-36 TH.05-001	13.1	
5	FOND02-083	1	AH36-05	AH-36 TH.05-001	9.1	
6	FOND02-084	1	AH36-05	AH-36 TH.05-001	13.1	
7	FOND02-1016	1	AH36-FB 080x06	U2 * AH36-FB 080x06 - 029	1,2	
8	FOND02-221	1	AH36-05	AH-36 TH.05-001	1.8	
9	FOND02-222	1	AH36-05	AH-36 TH.05-001	0.9	
10	FOND02-224	1	AH36-05	AH-36 TH.05-001	0.9	
11	FOND02-516	4	AH36-FB 050x05	Varies	5,9	
12	FOND02-517	6	AH36-FB 050x05	Varies	5,9	
13	FOND02-594	3	AH36-FB 050x05	U2 * AH36-FB 050x05 - 014	0,6	
14	FOND02-595	3	AH36-FB 050x05	Varies	0,6	
15	FOND02-596	3	AH36-FB 050x05	U2 * AH36-FB 050x05 - 014	0,6	
16	FOND02-597	1	AH36-FB 080x06	U2 * AH36-FB 080x06 - 020	14,1	
17	FOND02-900	1	AH36-FB 080x06	U2 * AH36-FB 080x06 - 006	10,1	
18	FOND02-908	1	AH36-FB 080x06	U2 * AH36-FB 080x06 - 007	10,1	
19	FOND02-909	1	AH36-FB 080x06	U2 * AH36-FB 080x06 - 001	1,2	
20	FOND02-935	1	AH 36-FB 050X06	U2 * AH 36-FB 050X06 - 001	3,4	
21	FOND02-936	1	AH 36-FB 050X06	U2 * AH 36-FB 050X06 - 001	4,9	
22	FOND02-942	1	AH 36-FB 050X06	U2 * AH 36-FB 050X06 - 001	3,3	
23	FOND02-943	1	AH 36-FB 050X06	U2 * AH 36-FB 050X06 - 001	4,9	

DRAW:	DATE:	FILE:
A3		